



PACIFIC FOREST TRUST

Private Forests. Public Treasures.

BUILDING THE CASE FOR NATURAL CLIMATE SOLUTIONS: Mt. Ashland Forest Conservation Project Case Study

Constance Best, Co-Founder and Senior Strategic Advisor
LTA Rally 2023
September 8, 2023



Conserve Forests. Advance Climate Solutions. Protect Water Sources. Save Wildlife Habitat.

Our Mission

To sustain America's forests for their public benefits of wood, water, wildlife, and people's well-being, in cooperation with landowners and communities.

Since 1993, the Pacific Forest Trust has created economic incentives that reward private forest owners for conserving their lands and practicing sustainable forestry. We have helped shape regional and national forest conservation and climate policies, all to save wildlife and their habitats, create effective climate change solutions, conserve intact forested landscapes, and protect natural water sources.



PACIFIC
FOREST
TRUST





Advocating for the Climate Benefits of Forests

- Managing U.S. forests for climate resilience and increased carbon stores is an *essential* climate solution.
- Conservation of existing forests provides the largest, fastest removals of atmospheric CO₂.
- PFT lead the way for forest conservation and stewardship to be included in state and federal climate action.



PFT integrates climate stewardship considerations into all our conservation projects from strategic outreach to project selection to drafting of conservation easements or management plans.

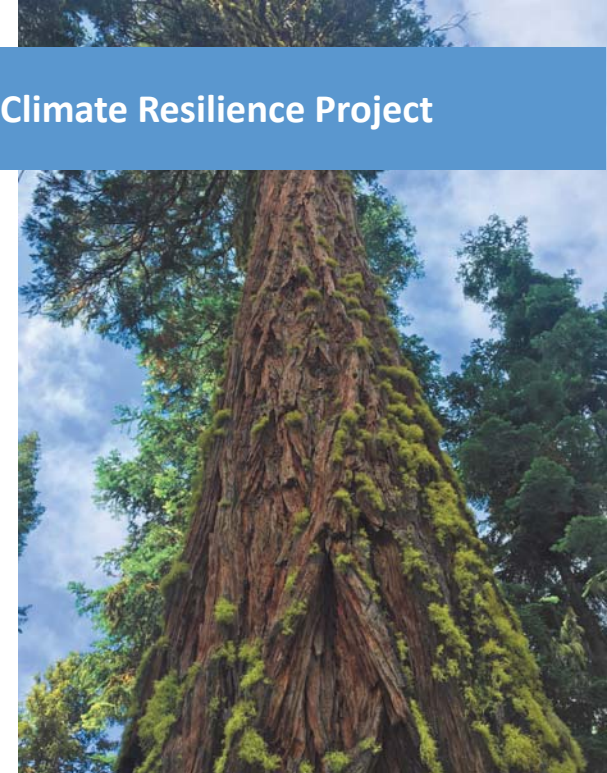
Conservation IS climate action

- 1 Project selection for more “best bet” resiliency
 - Use climate resiliency models that incorporate both geophysical characteristics and likely shifting vegetation types.
- 2 Conservation easement terms that can adapt with climate
 - Terms that guide management for more resilient forest characteristics
 - Baseline describes current conditions and stressors
 - Forest management plans that incorporate changing conditions, adaptive actions and on-going data for evaluation
- 3 Communicate positive climate goals to all stakeholders
 - Be straight-forward and engaging
 - Identify threats and promote project as a natural climate solution



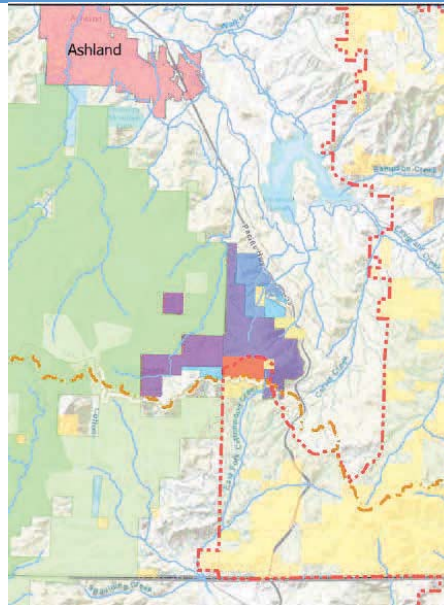
Mt. Ashland Forest Climate Resilience Project

- 1120 Acres on the Siskiyou Crest in southern Oregon
- Part of LTA’s Pacific Northwest Resilient Landscapes Initiative
- Partnership with Chinook Forests, Mountcrest Forest, LTA and OWEB
- \$2.5 million acquisition
- Showcase forest management to restore and enhance climate resiliency



Project Section: “Best Bet” for Climate Resilience

- Connectivity with other protected areas – Cascade Siskiyou NM, Rogue-Siskiyou NF, eased private lands
- World class biodiversity
- Permeability – omnidirectional ease of plant and wildlife movement
- Topographic diversity – variety of aspects, elevational gradient, soils
- Abundant water resources – multiple headwaters springs and year-round creeks
- Projected climate change impacts to vegetation



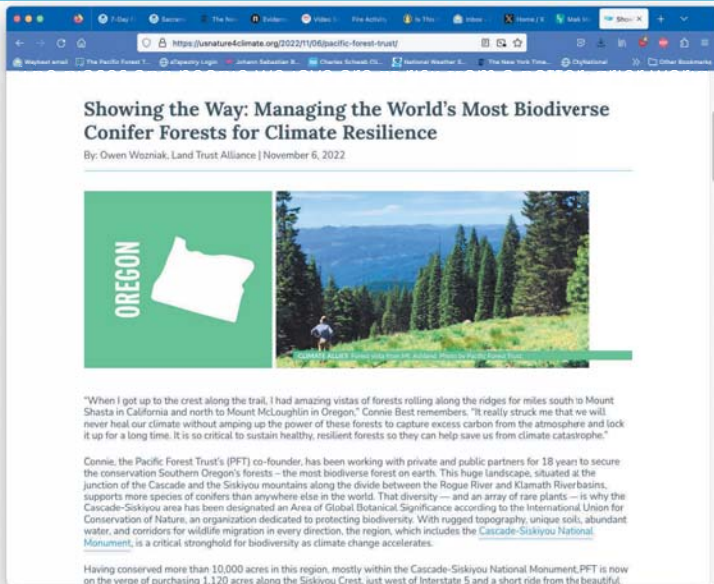
Messaging: Nature Offers the Solutions We Need

- The places and people we love are at risk from a hotter, drier world
- Extreme fires have gotten bigger and more frequent
- We have great opportunities through conservation and stewardship to work together to make our world safer
- Forests must be restored to be fire-adapted again, becoming healthier and better able to withstand drought and pests
- We can all benefit from traditional ecological practices of tribes
- A climate-resilient forest looks like this:
 - More big, older trees of drought-tolerant species
 - Fewer trees overall, especially small ones in the understory
 - More variety in spacing, with clumps and gaps of trees
- Much is changing, quickly but active engagement can a difference right now
- *This is new for all of us – let's learn together and share*



Messaging: Taking Climate Action in the Woods

"Hope is a verb with its sleeves rolled up"



Outreach strategy

- PFT web and print media
- US Nature4Climate collateral: blog and fact sheet
- Tours and local/regional stakeholder engagement throughout the process to build public support
- Local media coverage at every step
- Collaborations with USNature4Climate, LTA, Coalition of Oregon Land Trusts, forest landowner associations
- Management planning using local and regional scientific leaders and tribes to deepen community engagement
- Outreach and stewardship opportunities on-going
 - Especially for tribal cultural practices



Conserve Forests. Advance Climate Solutions. Protect Water Sources. Save Wildlife Habitat.

Thank you!

For More Information:

<https://pacificforest.org>

<https://www.pacificforest.org/managing-for-climate-resilience-on-mt-ashland/>

<https://www.pacificforest.org/the-mount-ashland-demonstration-forest-a-model-for-climate-resilient-forest-management/>

<https://usnature4climate.org/2022/11/06/pacific-forest-trust/>

